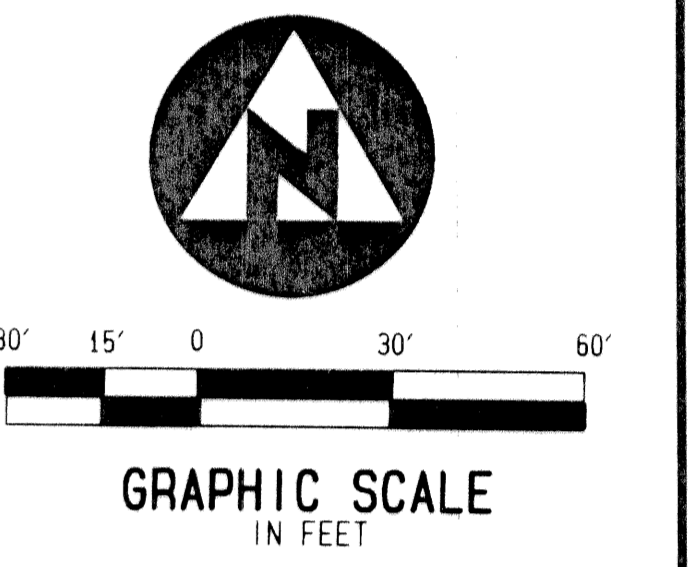
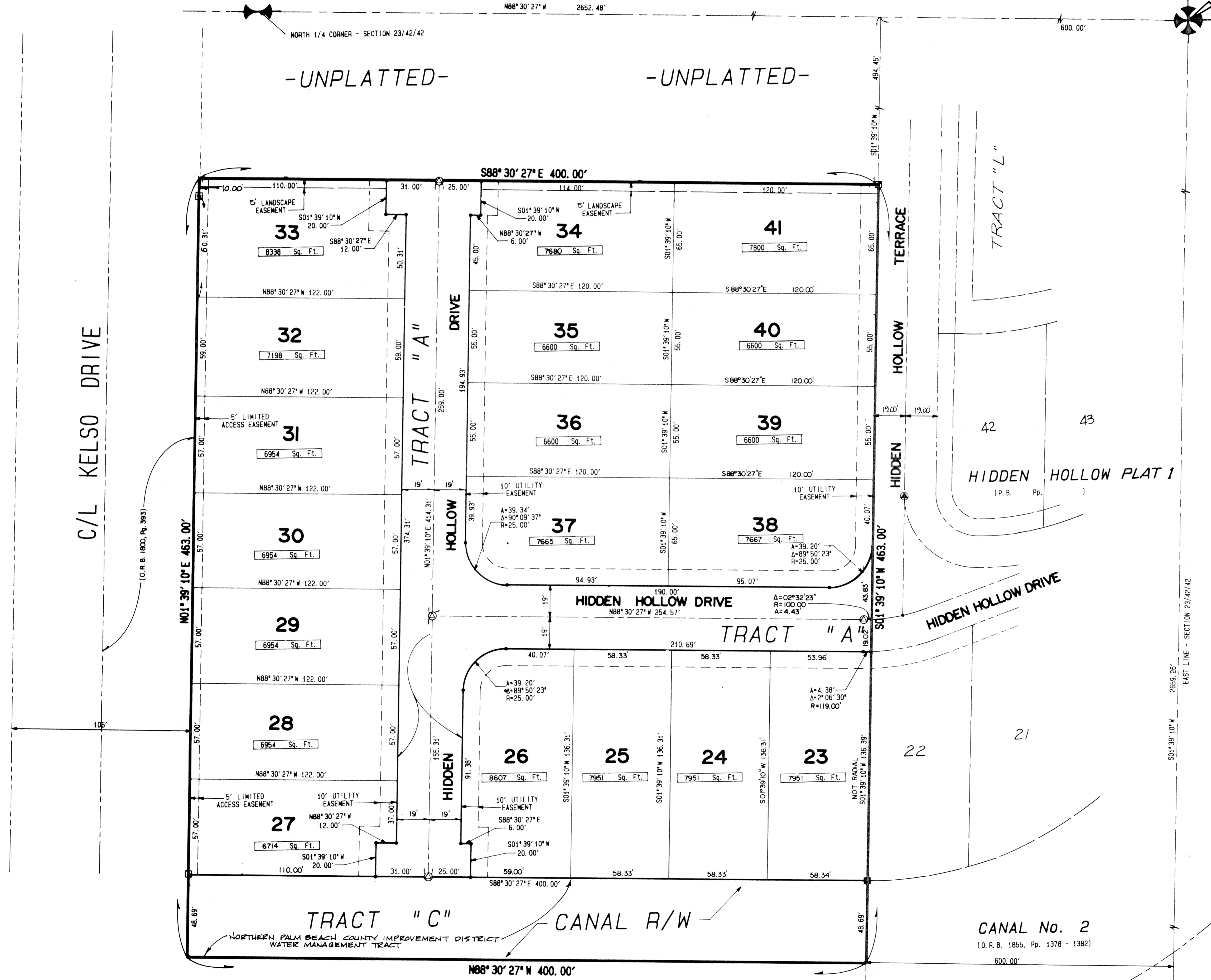


(A PLANNED UNIT DEVELOPMENT)
 LYING IN THE EAST ONE-HALF OF SECTION 23, TOWNSHIP 42 SOUTH, RANGE 42 EAST, CITY OF PALM BEACH GARDENS, PALM BEACH COUNTY, FLORIDA

N.E. CORNER
 SECTION 23/42/42
 FND P.B. CO. DISC IN CONC.



- SURVEYOR'S NOTES AND LEGEND:**
1. BEARINGS ARE BASED ON THE NORTH LINE OF SECTION 23, TOWNSHIP 42 SOUTH, RANGE 42 EAST, PALM BEACH COUNTY, FLORIDA, AS BEING NORTH 88°30'27" WEST BASED ON STATE PLANE GRID AZIMUTHS, FLORIDA EAST ZONE, PALM BEACH COUNTY ENGINEERING DEPARTMENT SECTIONAL DATUM, PALM BEACH COUNTY, FLORIDA.
 2. IN THOSE INSTANCES WHERE UTILITY/DRAINAGE STRUCTURES ARE CONSTRUCTED IN CONFLICT WITH THE PLATTED PERMANENT CONTROL POINTS (P.C.P.), STRADDLERS MONUMENTED AS PERMANENT CONTROL POINTS WILL BE SET TO REFERENCE THE PLATTED P.C.P. POSITION.
 3. ALL LOT LINES INTERSECTING CURVES ARE NON-RADIAL UNLESS OTHERWISE NOTED.
 4. DENOTES A SET #2424 PERMANENT CONTROL POINT (P.C.P.)
 5. DENOTES A SET #2424 PERMANENT REFERENCE MONUMENT (P.R.M.)
 6. DENOTES A FOUND #2424 PERMANENT REFERENCE MONUMENT (P.R.M.)
 7. DENOTES A FOUND #2424 PERMANENT CONTROL POINT (P.C.P.)

This instrument was prepared by Wm. R. Van Campen, R.L.S., in and for the offices of Bench Mark Land Surveying & Mapping, Inc., 4152 West Blue Heron Boulevard, Suite 121, Riviera Beach, Florida

BENCH MARK
 Land Surveying and Mapping, Inc.
 4152 West Blue Heron Blvd., Suite 121, Riviera Beach, FL 33404
 Fax (407) 844-9659 Phone (407) 848-2102

RECORD PLAT
HIDDEN HOLLOW
PLAT 2

DWN	S.E.G.	FB	DATE 06/24/96	WO.# P23H
CKD	FILE P23H-79.dwg	SCALE 1" = 30'	SHEET 2 OF 2	

SUBDIVISION # HIDDEN HOLLOW
 BOOK 78 PAGE 174
 FLOOD MAP #
 FLOOD ZONE
 ZONING
 QUAD #
 ZIP CODE
 SE
 PUD NAME City of Palm Beach Gardens
 TAZ-110